

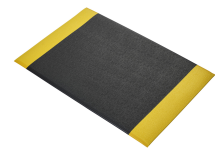
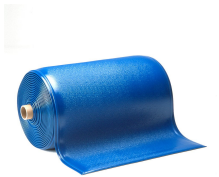
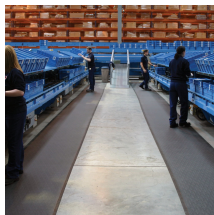


## Orthomat Premium

Reduces standing fatigue for those that move at work



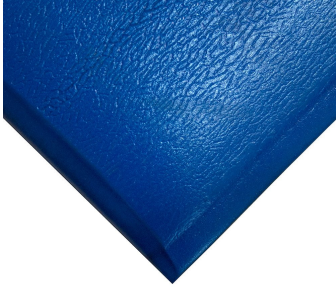
- Exceptional fatigue-relief properties – a real investment for the workplace.
- Dual layer construction for superior comfort and durability.
- Tough textured top surface for excellent resilience against wear and tear.
- Insulates against the effects of cold concrete floors.
- Low density under layer provides extremely effective underfoot cushioning.
- Ideal for demanding locations, especially where regular turning is involved.
- Tapered edges to reduce trip hazards.
- Range of colours available.
- Fire tested to BS EN 13501-1.



Styles Available



Green



Blue



Black



Black / Yellow - NEW!

## Parts

Part Number	Size	Colour	Weight (kg)
FF010001	0.6 m x 0.9 m	Black	2
FF010002	0.9 m x 1.5 m	Black	4.99
FF010003	0.9 m x 18.3 m	Black	61
FF010003C	0.9 m x per linear metre	Black	3.8
FF010004	0.9 m x 3.65 m	Black	12.15
FF010005	0.6 m x 18.3 m	Black	45.6
FF010005C	0.6 m x per linear metre	Black	2.49
FF010006	1.2 m x 18.3 m	Black	93.5
FF010006C	1.2 m x per linear metre	Black	5.1
FF010007	Special	Black	
FF010008	0.9 m x 2.0 m	Black	73.26
FF010701	0.6 m x 0.9 m	Black/Yellow	0.81
FF010702	0.9 m x 1.5 m	Black/Yellow	2.03
FF010703	0.9 m x 18.3 m	Black/Yellow	24.71
FF010703C	0.9 m x per linear metre	Black/Yellow	1.35
FF020003	0.9 m x 18.3 m	Blue	61
FF020003C	0.9 m x per linear metre	Blue	3.8
FF040003	0.9 m x 18.3 m	Green	61
FF040003C	0.9 m x per linear metre	Green	3.8
FF040005	1.2 m x 18.3 m	Green	88

## Technical Specifications

<b>Material</b>	Open Cell PVC (Foam)
<b>Surface Finish</b>	Tough Textured top surface
<b>Product Height</b>	12.5 mm
<b>Roll Length</b>	18.3 m
<b>Min. Operating Temperature</b>	0°C
<b>Max. Operating Temperature</b>	+60°C
<b>Resistance to Chemicals</b>	Resistant to most chemicals
<b>Environmental Resistance</b>	Suitable for dry indoor environments
<b>Typical Applications</b>	Production lines, Assembly areas, Packing stations, Workbenches, Retail counters
<b>Installation Method</b>	Loose lay
<b>Accessories</b>	Bevelled edging
<b>Cleaning Method</b>	Brush/mop the top surface
<b>Fire Tested to</b>	BS EN 13501-1 Class Dfl - s1
<b>COO (Country of Origin)</b>	CN
<b>Guarantee</b>	2 years when used in a dry environment

## Additional Information



Orthomat Premium Fire Test BS EN 13501



Orthomat Premium Fire Test EN ISO 11925



Orthomat Premium Fire Test EN ISO 9239

